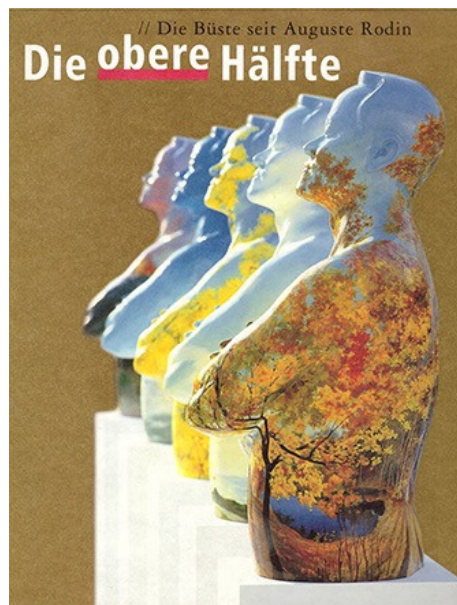


Die obere Hälfte

Exhibition catalogue, Other authors



Subtitle

Sie Büste seit Auguste Rodin

Institution

Städtische Museen Heilbronn, Kunsthalle Emden, Stiftung Liner Appenzell

Published

2005

Editor

Dieter Brunner, Marc Gundel, Toni Stoss

Location

Berlin

Publisher

Edition Braus at Wachter Verlag

Pages

188-189

Format

22,4 x 27,4 cm

Figures

2

ISBN

3-936921-01-6 (museum edition); 3-89904-177-1 (bookstore edition)

Language

German

The exhibition **Die obere Hälfte** (The upper half), which was shown at the [Städtische Museen Heilbronn](#), the [Kunsthalle Emden](#) and the [Kunstmuseum Appenzell](#), presented artistic works on the subject of the bust from the 19th century to the present. The catalogue, with texts by Dieter Brunner (Ed.), Jeanette Kohl, Philip Zitzelsberger, Astrid Nielsen, Achim Sommer, Toni Stoss (Ed.), Birk Ohnesorge, Tilman Treusch, Inge Herold, and Daniela Deul, shows artistic works by Magdalena Abakanowicz, John Ahearn, Alexander Archipenko, Jean Arp, Stephan Balkenhol, **Angelika Böck**, Emile-Antoine Bourdelle, Maurizio Cattelan, Honoré Daumier, Saskia de Boer, Wim Delvoye, Anré Derain, Wang Du, Wang Fu, Katsura Funakoshi, Alberto Giacometti, Robert Graham, Bernhard Heiliger, Bernhard Hoetger, Otmar Hörl, Leiko Ikemura, Hans Josephson, Gerhard Kehl, Per Kirkeby, Dietrich Klinge, Franticek Klossner, Vollarad Kutscher, Henri Laurens, Wilhelm Lehmbruck, Markus Lüpertz, Paul McCarthy, Constantin Meunier, Henry Moore, Mimmo Paladino, A.R. Penck, Evan Penny, Thom Puckey, Marc Quinn, Markus Raetz, Adolfo Riestra, Auguste Rodin, Mnardo Rosso, Dieter Roth, Peter Sauerer, Iris Schieferstein, Gil Shachar, Daniel Spoerri, Rosemarie Trockel, Timm Ulrichs, Rob Wynne and Ah Xian.

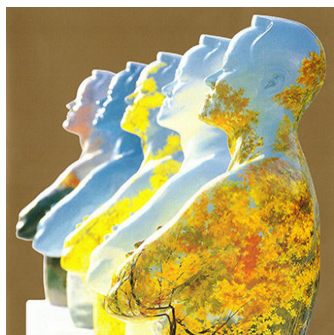
Related



Artworks

StillePost

1999, Installation, Contributive, Portrait as Dialogue



Exhibitions

Die obere Hälfte: Die Büste von Rodin bis Wang Du

2006, Group Exhibition



Exhibitions

Die obere Hälfte, Die Büste von Rodin bis Funakoshi

2005, Group Exhibition



Exhibitions

Die obere Hälfte. Die Büste seit Auguste Rodin

2005, Group Exhibition