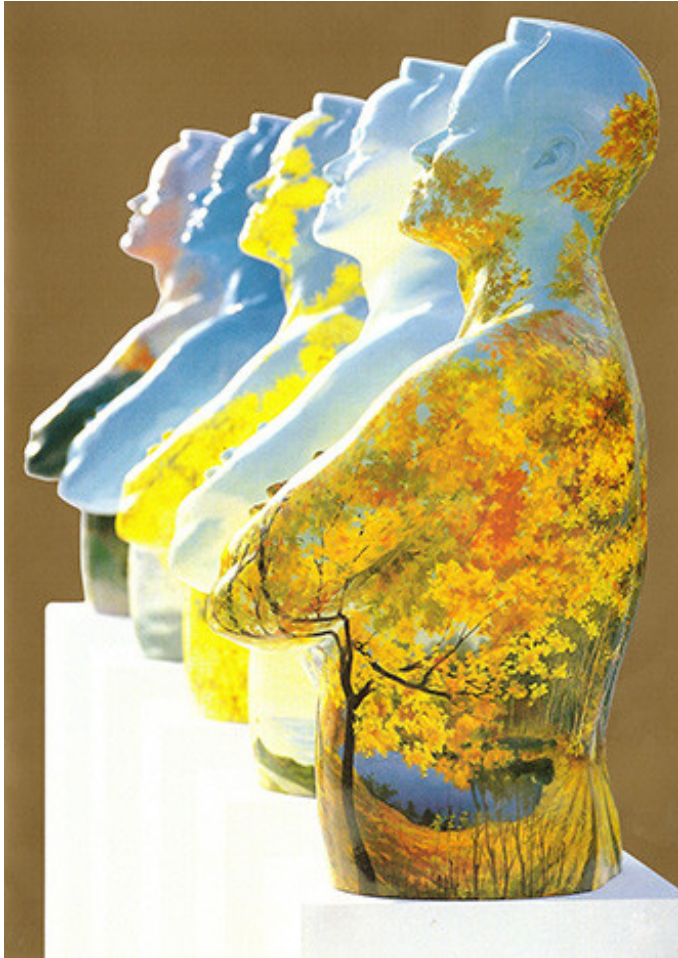


Die obere Hälfte: Die Büste von Rodin bis Wang Du

Group Exhibition



2006/01/29
2006/04/23

Based on Auguste Rodin's work, the exhibition curated by Dieter Brunner (Städtischen Museen Heilbronn), Achim Sommer (Kunsthalle Emden) and Toni Stoss (Kunstmuseum Appenzell) presented selected busts in the visual arts.

Featured Work



StillePost
1999, Installation, Contributive, Portrait as Dialogue