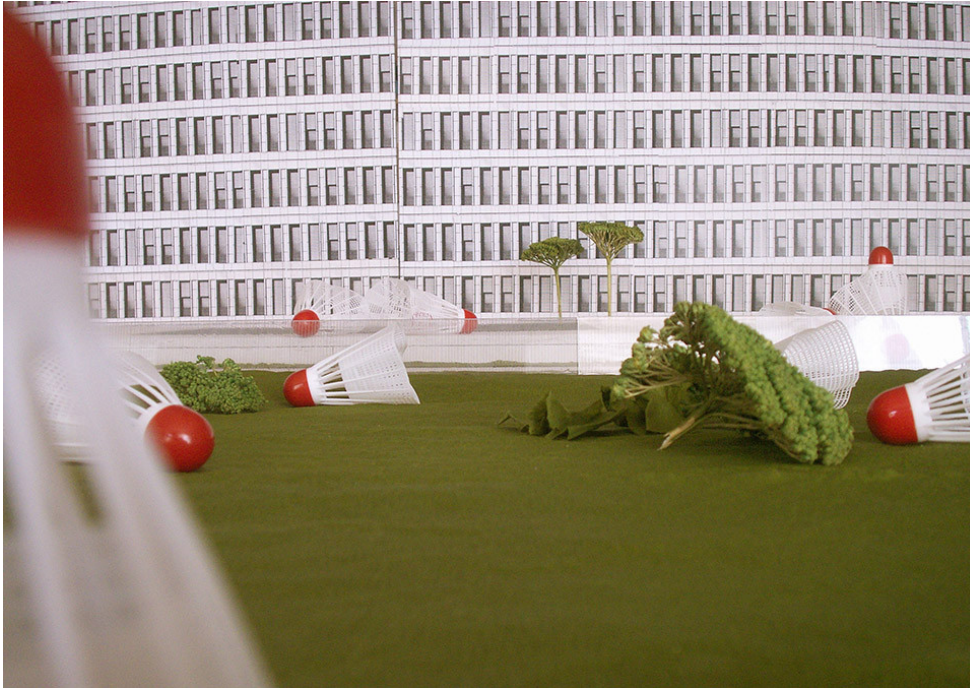


# Shuttle

Competition entry

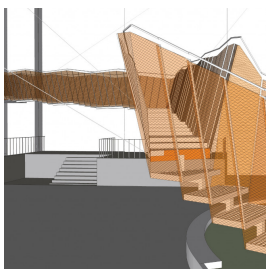


**Details:**  
Steel lacquered

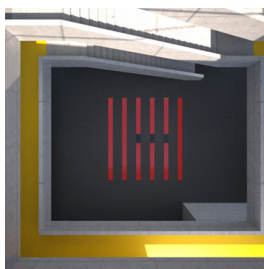
My (unrealized) design for an art-in-architecture measure for the new **BND** (German Federal Intelligence Service) building in Berlin staged the traces of an apparent interaction to address the topic of border crossing.

15 four-meter-high shuttlecocks, formed from sheet steel and painted, were to "play" on the field between the terraces of the new **BND** building and the adjacent Pankepark (outside the dedicated area) in order to draw attention to the spectrum of possible associations between attack and defence, between friendly play and enemy combat.

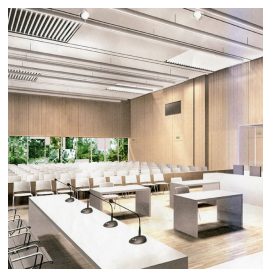
## Related



**Artworks**  
**Bavarian Rise**  
2018, Competition entry



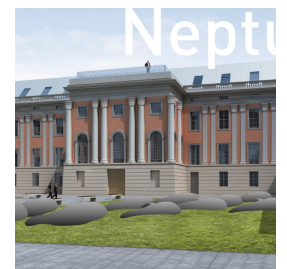
**Artworks**  
**Transformator**  
2010, Competition entry



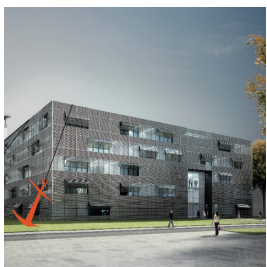
**Artworks**  
**Jungle**  
2014, Competition entry



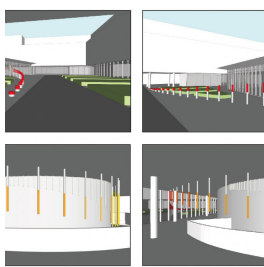
**Artworks**  
**Fire Water**  
2010, Competition entry



**Artworks**  
**Neptune's Field**  
2011, Competition entry



**Artworks**  
**Ocean**  
2013, Competition entry



**Artworks**  
**Parabel**  
2018, Competition entry



**Artworks**  
**Sequence**  
2015, Competition entry



**Artworks**  
**Studiolo**  
2007, Competition entry



**Artworks**  
**Eldorado: Time is money, money is gold**  
2017, Competition entry